

Anti-IL12B Picoband Antibody
Catalog # ABO12929**Specification**

Anti-IL12B Picoband Antibody - Product Information

Application	WB, E
Primary Accession	P29460
Host	Rabbit
Reactivity	Human, Mouse
Clonality	Polyclonal
Format	Lyophilized

Description

Rabbit IgG polyclonal antibody for IL12B detection. Tested with WB, Direct ELISA in Human;Mouse.

Reconstitution

Add 0.2ml of distilled water will yield a concentration of 500ug/ml.

Anti-IL12B Picoband Antibody - Additional Information

Gene ID 3593

Other Names

Interleukin-12 subunit beta, IL-12B, Cytotoxic lymphocyte maturation factor 40 kDa subunit, CLMF p40, IL-12 subunit p40, NK cell stimulatory factor chain 2, NKSF2, IL12B, NKSF2

Application Details

Western blot, 0.1-0.5 µg/ml
 Direct ELISA, 0.1-0.5 µg/ml

Subcellular Localization

Secreted.

Contents

Each vial contains 4mg Trehalose, 0.9mg NaCl, 0.2mg Na₂HPO₄, 0.05mg NaN₃.

Immunogen

E. coli-derived human IL12B recombinant protein (Position: I23-E253).

Cross Reactivity

No cross reactivity with other proteins.

Storage

At -20°C; for one year. After r°Constitution, at 4°C; for one month. It°Can also be aliquotted and stored frozen at -20°C; for a longer time. Avoid repeated freezing and thawing.

Anti-IL12B Picoband Antibody - Protein Information

Name IL12B

Synonyms NKSF2

Function

Cytokine that can act as a growth factor for activated T and NK cells, enhance the lytic activity of NK/lymphokine-activated killer cells, and stimulate the production of IFN-gamma by resting PBMC.

Cellular Location

Secreted.

Anti-IL12B Picoband Antibody - Protocols

Provided below are standard protocols that you may find useful for product applications.

- [Western Blot](#)
- [Blocking Peptides](#)
- [Dot Blot](#)
- [Immunohistochemistry](#)
- [Immunofluorescence](#)
- [Immunoprecipitation](#)
- [Flow Cytometry](#)
- [Cell Culture](#)

Anti-IL12B Picoband Antibody - Images

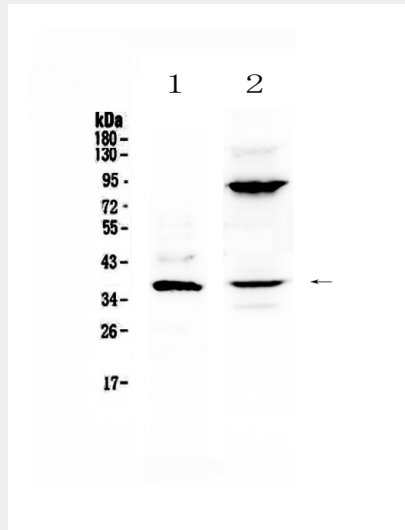


Figure 1. Western blot analysis of IL12B using anti-IL12B antibody (ABO12929).

Anti-IL12B Picoband Antibody - Background

Subunit beta of interleukin 12 (IL12B), also known as interleukin 12B, or interleukin-12 subunit p40, is a subunit of human interleukin 12. It is mapped to 5q33.3. This cytokine is expressed by activated macrophages that serve as an essential inducer of Th1 cells development. This cytokine has been found to be important for sustaining a sufficient number of memory/effector Th1 cells to mediate long-term protection to an intracellular pathogen. Overexpression of this gene was observed in the central nervous system of patients with multiple sclerosis (MS), suggesting a role of this cytokine in the pathogenesis of the disease.